

Aluminium alloy window sill.

DESCRIPTION

Window sill in 20/10 aluminium alloy suitable for both new constructions and renovations.

Factory painting available on request (RAL colours only).

It is a single-piece element bent in the factory, avoiding joints that could cause water infiltration.

Equipped with rear edge, side edges, and drip edge to ensure rainwater drains only from the front, keeping the façade clean.

Custom-made.



MAIN PROPERTIES

- Enhanced façade aesthetics;
- No thermal bridges that could compromise comfort, building performance, or the ETICS system;
- Also available in custom-made versions.

TECHNICAL DATA

Thickness	2 mm
-----------	------

CHARACTERISTICS

APPLICATION

Method of application:

Windowsills are supplied custom-sized, pre-bent, and ready for installation.

They must be installed on stable, coplanar surfaces that are perfectly clean and dry.

Ensure that the drip edge always protrudes beyond the façade to guarantee proper rainwater drainage and prevent infiltration.

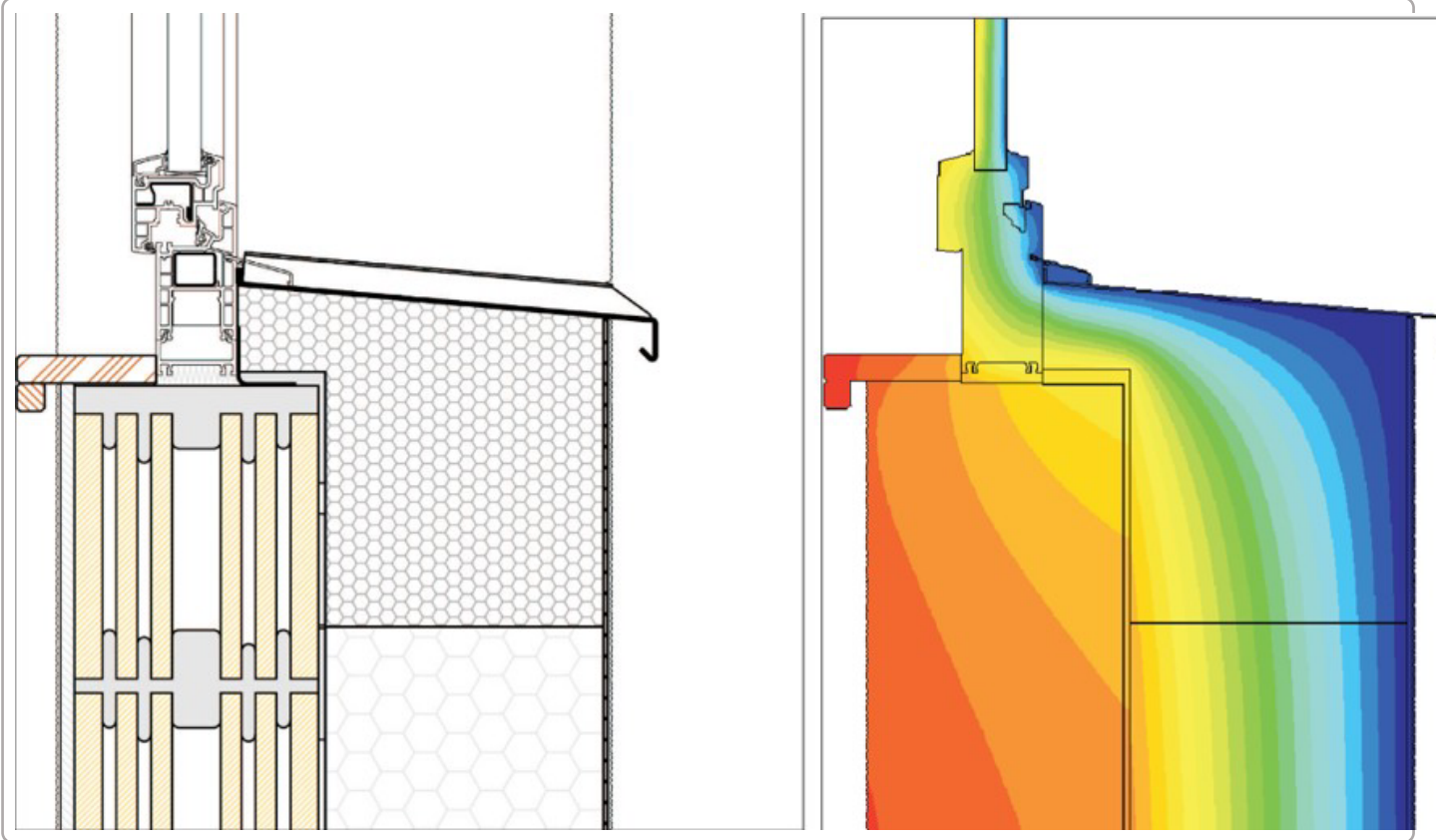
STORAGE

Storage:

Store in a dry, covered environment, protected from rain, humidity, and atmospheric agents.

ATTACHMENTS

Attachment 1: TECHNICAL DETAIL with ISOTHERM



Attachment 2: AVAILABLE AESTHETIC VARIANTS

